

Institution Infrastructure

Institution Entrance:



Institution Premises



The Institution is situated in large campus of 9.7 acres. The total build up area is 1626.98 Sq. Mtr.sqm. Curricular and Co-curricular activities of the Institution are carried out in 02 buildings viz., main building C, building C1. The Institution is sufficiently well equipped in terms of physical infrastructure for existing academic programmes and administration. There are well furnished 08 classrooms available with sufficient lighting arrangement, benches for sitting arrangements, ICT facility and electric fans for ventilation. For effective practical work, sufficiently renovated and well equipped laboratories are available in the Institution with necessary facilities. The Institution activities are administered from centrally situated cabin of the Principal which is well equipped with state of ICT equipments as well as well renovated administrative block which is located at the Building C1. There are well furnished one seminar hall available for academic and other activities. Institution has various sport facilities with all amenities for indoor and outdoor sport activities. Institution has two hundred meters athletic track with all amenities but also has gym with all modern equipments. There are sufficient open and parking spaces. The Institution has a yoga center, canteen and hostels

Principal Office



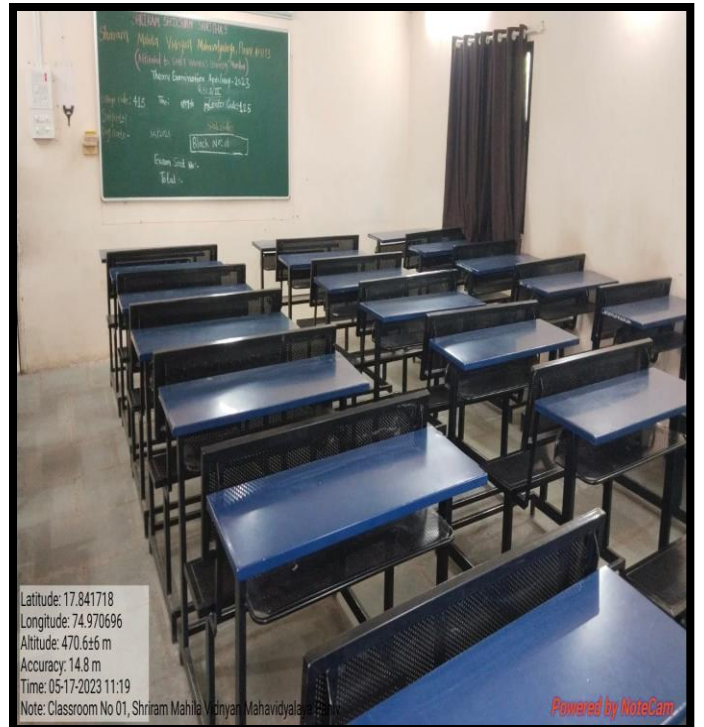
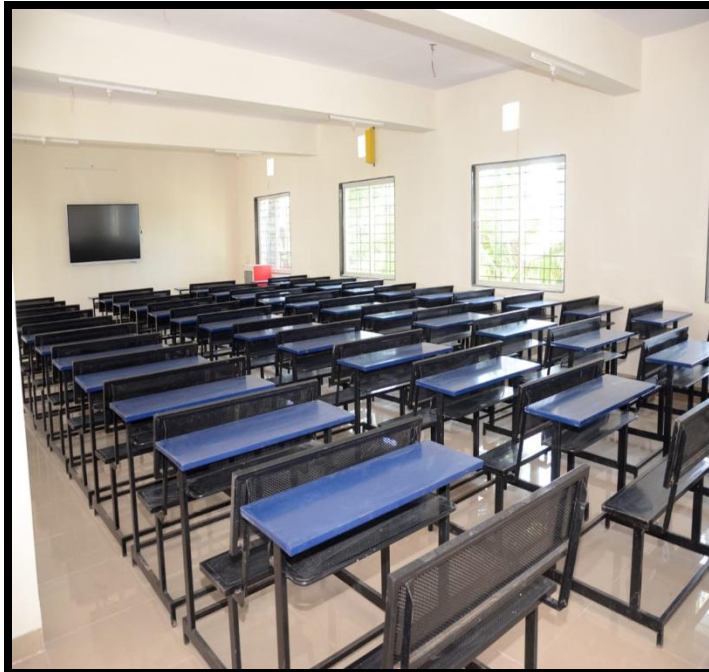
Vice –Principal Office



Administrative Office

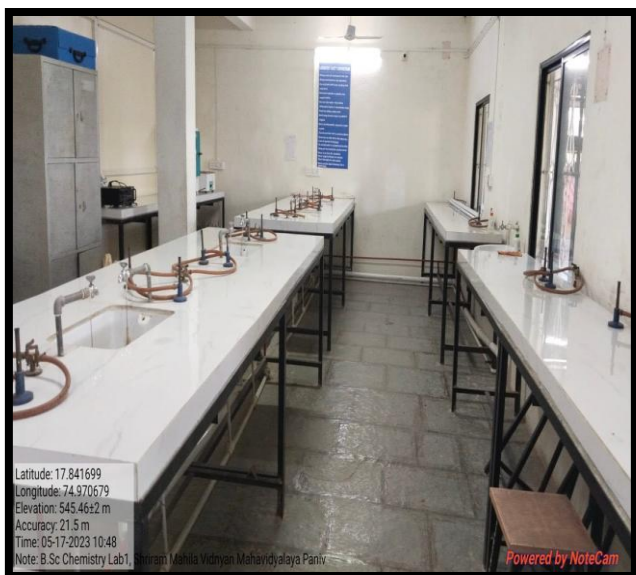


Classrooms: ICT facilities are available in all classrooms. **Seminar Hall** of 100 seating capacity is available with adequate infrastructure necessary for recreational and cultural activities



Laboratories: For effective practical work, sufficiently renovated and well equipped five laboratories are available in the 'C' building of the Institution with necessary facilities. Each department at the Institute boasts of an array of highly advanced laboratories that are sufficiently equipped with the latest instruments and apparatus. The aim is to provide students a conceptual as well as practical understanding of the subject through hands-on training.

B.Sc. Laboratory-I



B.Sc. Laboratory-II



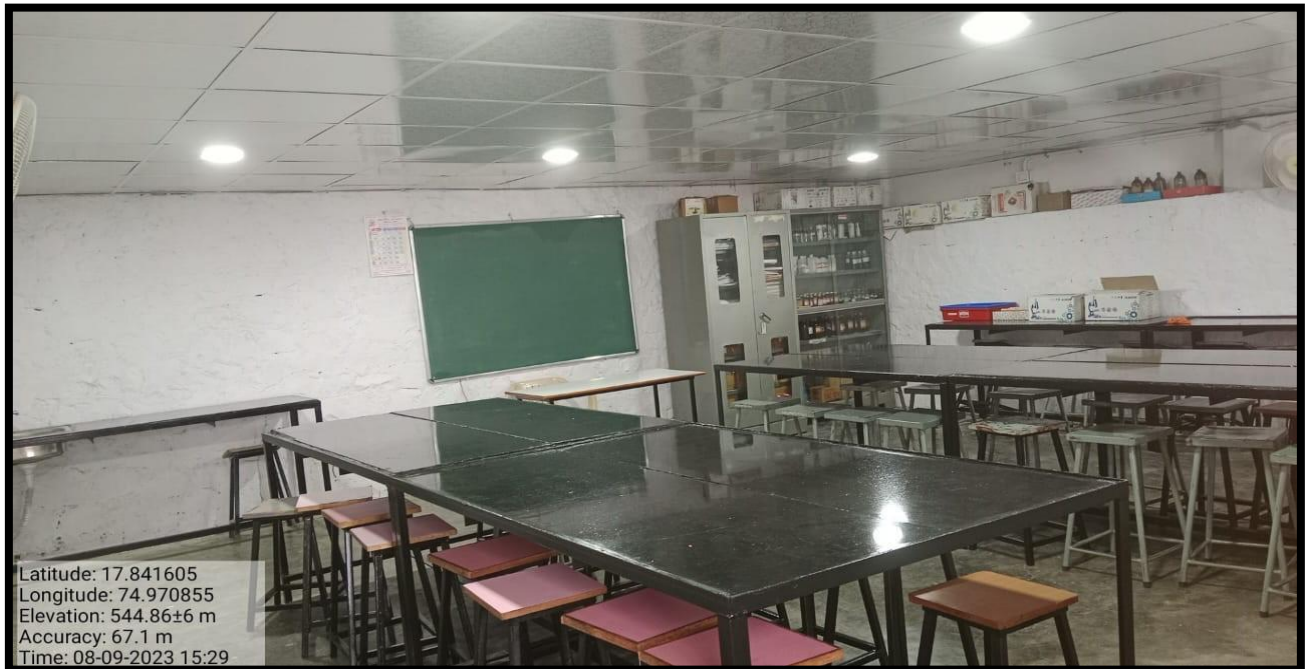
M.Sc. Laboratory



Zoology Laboratories



Botany Laboratory



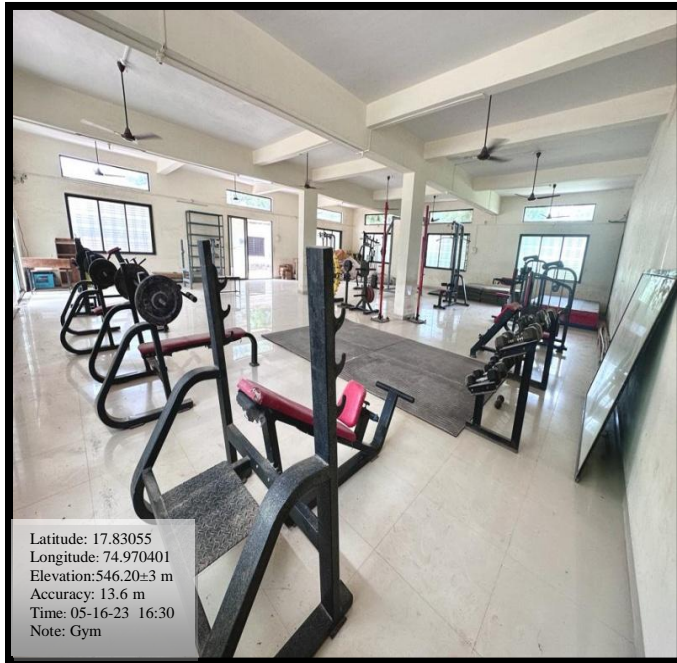
Library: The Institution library is spacious with ample day light, ventilation and adequate seating capacity of reading hall. There is a separate library having 112.00 sqm areas for effective learning resources with computerized library services are available with suitable software.



Computer Laboratory: There are well-furnished with appropriate software computer laboratory with backup facilities is available. The computer lab provides computer and internet facilities to students and Institution staff in our Institution. Computers are typically equipped with internet access.



Gymnasium: A Gymnasium has available Physical exercise facilities for the students and the staff. Institution has multi-station Gym with Chest Press, Leg Press, Leg extension, Leg Curl, Shoulder Press, Bench Press, LatPully, Pec Deck and Double Bar etc.



Play Ground: Special attention is given to conducive environment for promotion of sports activities of the Institution. The Institution provides playground for outdoor sports like Cricket, Football, Basketball, Kho-Kho, Kabaddi, Bad Minton etc. The Institution organizes various sports activities, Sports week etc. annually in the Institution premises and on Ground.



Hostel Facility: Sanstha has constructed two hostels for girl students. After taking Admission Institution students are admitted in hostel for accommodation. Mrs. Suman Patil Girls Hostel is **21,267,580 funded by Scrabble Digital Limited's CSR**. Both hostel have facilitated with telephone, special doctor appointed for health care, Medical facility available with first aid/ provided to sick students, RO facility to be provided coffee & Tea available at hostel, Mess with dining hall, study hall, washrooms, sanitary vending machine and Wi -Fi High speed internet to be provided. Recreation facilities provided for students. For Security purpose CCTV Cameras are installed in hostel premises and one male security guard at main entrance and rector is in appointed in hostel.

A. Mrs. Ujwalatai Shinde Girls Hostel: (Number of rooms 44, Capacity of students 250)

In-room Amenities

- ✓ One Bed per Student shall be offered
- ✓ Fully furnished with beds and mattress
- ✓ Individual lockable almirahs for storage
- ✓ Geysers in washrooms
- ✓ Study tables
- ✓ Dressing Mirror
- ✓ Tube lights & LED
- ✓ Dust Bin in each room



B. Smt. Suman Patil Girls Hostel(Number of rooms 54, Capacity of students 208)

In-room Amenities

- ✓ One Bed per Student shall be offered
- ✓ Fully furnished AC rooms with beds and mattress
- ✓ Individual lockable almirahs for storage
- ✓ Study tables
- ✓ Dressing Mirror
- ✓ Tube lights & LED
- ✓ Dust Bin in each room



Parking Facility: Parking facility for vehicles is available in Institution area. This facility is available for both students and staff members separately. In parking area CCTV Cameras are installed for security purpose. Separate security guard is appointed for parking. Approximately 200, Two-wheeler vehicles at a time can be parked.



ATM Facility: ATM facility is available at the entry of the Institution. The facility is provided by HDFC Bank. ATM is useful to students, parents, Visitors and Institution staff.



Bus Facility: Sanstha's 18 buses are available for safe and secure transportation of students at affordable rate.

