

Institution Infrastructure

Main Entrance



Institution Premises



The Institution is situated in large campus of 9.7 acres. The total build up area is 2463.3241 Sq.Mtr. Curricular and Co-curricular activities of the Institution are carried out in G-2 Building. The Institution is sufficiently well equipped in terms of physical infrastructure for existing academic programmes and administration. There are well furnished 07 classrooms available with sufficient lighting arrangement, benches for sitting arrangements, ICT facility and electric fans for ventilation. For effective practical work, sufficiently renovated and well equipped laboratories are available in the Institution with necessary facilities. The Institution activities are administered from centrally situated cabin of the Principal which is well equipped with state of ICT equipments as well as well renovated administrative block which is located at the Ground floor. There are well furnished one seminar hall available for academic and other activities. Institution has various sport facilities with all amenities for indoor and outdoor sport activities. Institution has two hundred meters athletic track with all amenities but also has gym with all modern equipments. There are sufficient open and parking spaces. The Institution has a yoga center, canteen and hostels.

Principal Office



Administrative Office



IQAC



Security Room

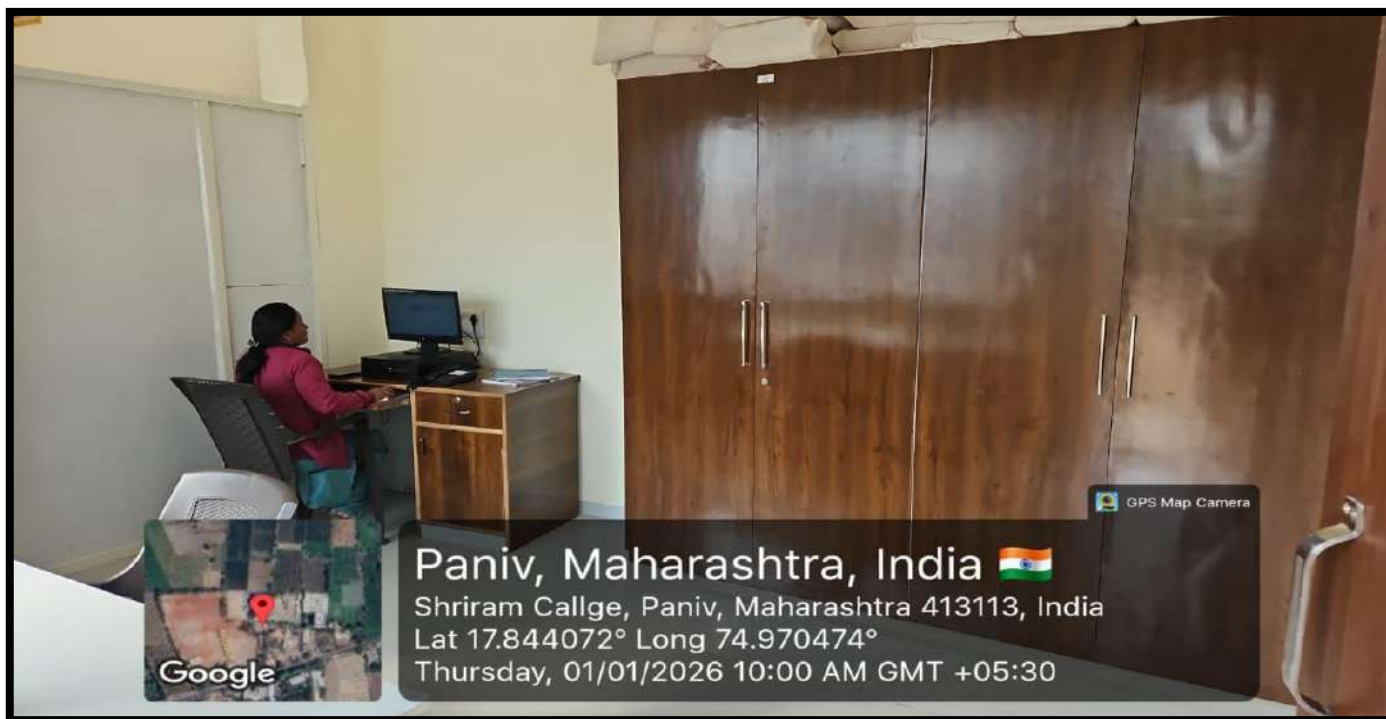


Playground

Special attention is given to conducive environment for promotion of sports activities of the Institution. The Institution provides playground for outdoor sports like Cricket, Football, Basketball, Kho-Kho, Kabaddi, Bad Minton etc. The Institution organizes various sports activities, Sports week etc. annually in the Institution premises and on Ground.



Exam centre



U.G. (B.Sc.) Chemistry Laboratories B.Sc. Laboratory-I

Laboratories: For effective practical work, sufficiently renovated and well equipped four laboratories are available in the Institution with necessary facilities. Each department at the Institute boasts of an array of highly advanced laboratories that are sufficiently equipped with the latest instruments and apparatus. The aim is to provide students a conceptual as well as practical understanding of the subject through hands-on training.



Preparation Room



P.G. (M.Sc.) Chemistry Laboratories



Zoology Laboratory



Microbiology Laboratory



NSS/Cultural/Sport Department



Girl's Common/ Sick Room



Sanitary Napkin and Disposal Machine



Suggestion Box in Common Room



Classrooms: ICT facilities are available in all classrooms. Seminar Hall of 100 seating capacity is available with adequate infrastructure necessary for recreational and cultural activities







Reading Room



Computer Laboratory



Institution Library



Ladies Washroom



Gents Washroom



Water Purification Plant



Gymnasium: A Gymnasium has available Physical exercise facilities for the students and the staff. Institution has multi-station Gym with Chest Press, Leg Press, Leg extension, Leg Curl, Shoulder Press, Bench Press, LatPully, Pec Deck and Double Bar etc.



Wheel Chair and Ramps



Blind and Walking Stick



Mess



Canteen



Girls Hostel

The college provides safe and comfortable accommodation in two Well-maintained girls' hostels:

Dr. Sanjeevani Pawar Girls Hostel

(44 rooms, 250 capacity)

Smt. Suman Patil Girls Hostel

(54 rooms, 208 capacity)

Key Amenities:

RO drinking water, Geysers, Wi-Fi, Study Hall, Mess & Dining Hall

Sanitary napkin vending machines, Health care with appointed doctor.

Recreation area, CCTV, security guard at main gate, female rector for discipline and student welfare.

Dr.Sanjivani Amrutrao Pawar Girl's Hostel



Smt. Suman Patil Girl's Hostel



Student Facility Centre



ATM Facility

ATM facility is available at the entry of the Institution. The facility is provided by HDFC Bank. ATM is useful to students, parents, Visitors and Institution staff



Guest House



Latitude: 17.842757
Longitude: 74.970127
Elevation: 547.16±21 m
Accuracy: 14.6 m
Time: 05-18-2023 15:57

Note: Guest House ,Shriram Mahila Vidnyan Mahavidyalaya Paniv

Powered by NoteCam

Solar Systems

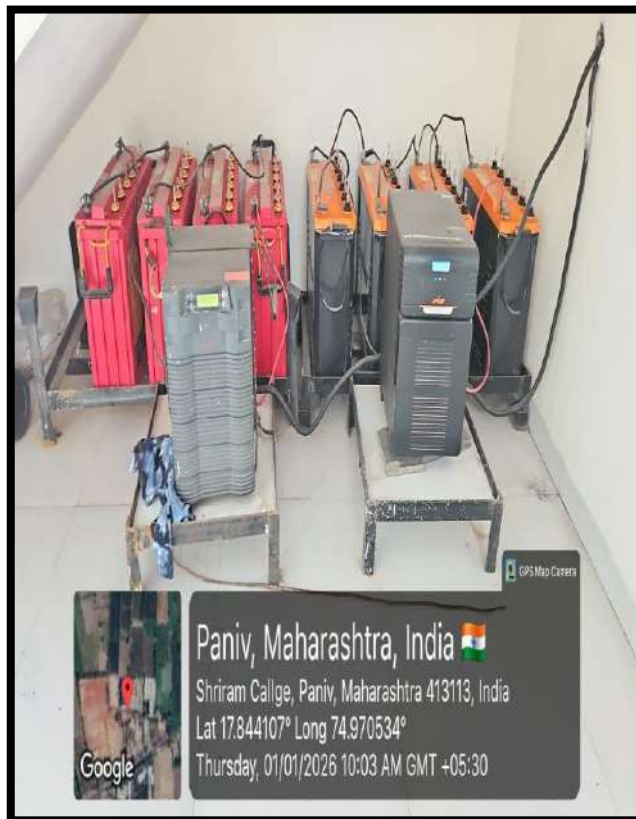


GPS Map Camera



Paniv, Maharashtra, India
SMVM Paniv, Maharashtra 413118, India
Lat 17.841534°
Long 74.970865°
17/10/24 01:02 PM GMT +05:30

Electricity Backup



Parking Facility

Parking facility for vehicles is available in Institution area. This facility is available for both students and staff members separately. In parking area CCTV Cameras are installed for security purpose. Separate security guard is appointed for parking. Approximately 200, Two-wheeler vehicles at a time can be parked.



Bus Facility

Affordable and reliable transportation with CCTV & GPS services are available for students from nearby villages. Ensures safe daily commute and used for field visits, industrial tours, excursions. Transportation of SSS supervised by the Bus Committee and managed by trained, experienced drivers.

